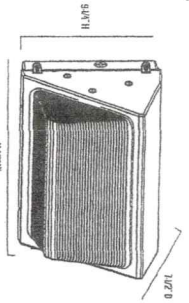


EMP8 Series



Series Overview			
DIMENSIONS	PRODUCT HEIGHT	MOUNTING HEIGHT	SPACING
1.127 D x 1.127 W x 9.411 H	8.6 In.	8 W 8 In.	2 in 3 lines the mounting height

Feature Specifications

HOUSING	Heavy duty, die-cast aluminum housing with lipged door frame. Dual lenses protect product from view.
LENS ASSEMBLY	Heat and shock resistant, non-reflective clear polycarbonate lens.
MOUNTING	1/2" NPT lipged brackets for conduit, enhances force on top, one on each side, one on lead.

Electrical Performance

OPERATING MINIMUM	Estimated 70,000 hours	LIFESPAN FACTOR	1.03	TOTAL HARMONIC DISTORTION	< 20%	DIMMABLE	No
INPUT VOLTAGE	120V	218V	240V	277V			
Current Draw (amped)	0.4A	0.2A	0.2A	0.3A			

Warranty & Certifications

WARRANTY	5 Year Limited	UL LISTED	ULC	ENERGY STAR
-----------------	----------------	------------------	------------	--------------------

Output Specifications

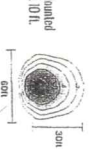
SQU	LIGHT OUTPUT	COLOR TEMP	POWER CONSUMPTION	POWER ACCURACY	FOCUS	REPLACES
EMW90592	2000 Lumens	Cool White (5000K)	47W	±10.0%	≥70 CRI	600W PSNL
EMW90592Z	2200 Lumens	Neutral White (4000K)	47W	±10.0%	≥70 CRI	100W PSNL

Accessories

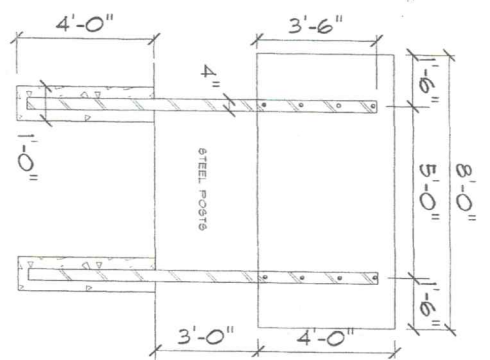


Philips LED Bulbs: 200W/200W/240W/277V
 SKU: E4072100/240W/277V
 5W
 Philips LED bulb visible.
 Color of the bulb may vary in the field as required.

Photometric Diagrams



*All dimensions are subject to change without notice. © 2017 Optimum Lighting. All rights reserved. Optimum Lighting is a registered trademark of Optimum Lighting. Optimum Lighting is a registered trademark of Optimum Lighting.



GRAND SLAM AUTO
 USED CAR SALES
 AND
 REPAIR

DOUBLE FACED WITH
 MIDDLE SUPPORTS

SIGN DETAIL
 SCALE: 1/4" = 1'-0"



SIGN & LIGHTING DETAILS THOMAS CORCORAN 1924 ROUTE 9W MILTON, NEW YORK TN OF MARLBORO 103.1-2-61	SCALE AS SPECIFIED	LOUIS S. DUBOIS, P.E. 116 VINEYARD AVENUE HIGHLAND, NEW YORK (845) 691-2247 OFFICE (845) 691-6515 FAX (845) 224-7102 CELL louisdubois@optimum.net	DATE: 10/5/2017	<h1>4</h1>
	DRAWN BY LSD		REVISIONS	
	APPROVED LSD		DRAWING DETAIL SHEET	